

Minimize Your Footprint



Brook Crompton designs allow the terminal box to be located on either the top, left or right side of the motor. (F1; F2; F3 assemblies)

Benefit: saves space in allowing a more compact assembly

Benefit: positioning a terminal box in the top position (F3) allows easier access to the electrical connections during manufacturing and in-field servicing

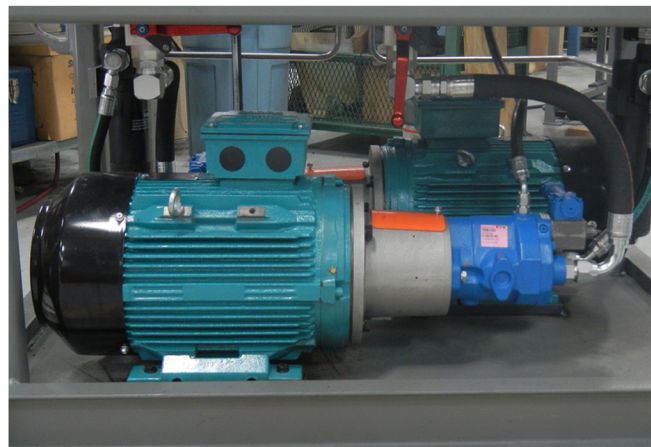
Benefit: avoids having a terminal box hanging out over the edge of the package; less obstruction; more safety in movement.

Benefit: removing feet on direct coupled applications avoids feet being an obstruction.

Benefit: These alternate terminal box positions can be achieved without disassembling the motor.

The Brook Crompton Advantage

Brook Crompton W-Series motors have been widely accepted by packagers of hydraulic power units, pumps, and fans where space is limited, as seen below.



Brook Crompton - Manufacturing Quality Electric Motors For Over 100 Years

sales@brookcromptonna.com Phone: 1-800-668-6779

Toronto - Montréal - Cleveland - Chicago - Memphis - Houston - Dallas - Los Angeles